

# SEBB Uniform Dental Plan (UDP) Group #09600

## Delta Dental PPO<sup>SM</sup> Uniform Dental Plan - Benefit Summary

<b>Effective Date</b>	January 1, 2024
<b>Benefit Period</b>	January 1, 2024 – December 31, 2024
<b>Benefit Period Maximum (Per Person)</b>	\$1,750
<b>TMJ</b>	<b>70%</b>
Annual Maximum (Per Person)	<b>\$1,000*</b>
Lifetime Maximum (Per Person)	<b>\$5,000*</b>
<b>Orthodontia – Adults &amp; Children</b>	50%
Lifetime Maximum (Per Person)	\$1,750

### Choice of Dentist ->>>

Amounts below show what the plan pays once you've met your deductible.

	Dental Networks		
	Delta Dental PPO <sup>SM</sup> Dentists in Washington State	Non-PPO Dentists in Washington State	Out of State
<b>Benefit Period Deductible</b>			
Does Not Apply to Class I or <b>Children under age 15*</b> (Per Person/Per Family)	<b>\$50/\$150</b>	<b>\$50/\$150</b>	<b>\$50/\$150</b>
<b>Class I – Diagnostic &amp; Preventive</b>			
Exams (every 6 months)	<b>100%</b>	<b>80%</b>	<b>90%</b>
Cleaning (every 6 months)			
Fluoride			
X-Rays (complete X-rays every 5 years)			
Sealants			
<b>Class II – Restorative</b>			
Fillings	<b>80%</b>	<b>70%</b>	<b>80%</b>
<b>Posterior Composite Fillings*</b>			
Endodontics (Root Canal)			
Periodontics (Gum Treatment)			
Oral Surgery			
General Anesthesia/IV Sedation			
<b>Crowns</b>			
<b>Crowns*</b>	<b>70%</b>	<b>60%</b>	<b>70%</b>
<b>Class III – Major</b>			
Dentures	<b>50%</b>	<b>40%</b>	<b>50%</b>
Partial Dentures			
Implants			
Bridges			

**\*Benefit Enhancement**



This is a brief summary of benefits and isn't a contract. The plan's benefits booklet provides more details of your Uniform Dental Plan. Please feel free to call (800-554-1907) or text (833-604-1246) our customer service department or visit our website at [DeltaDentalWA.com/sebb](https://www.DeltaDentalWA.com/sebb) if you have any questions.

*Keep in mind, you will likely experience the greatest savings when you see a Delta Dental PPO dentist.*

# Uniform Dental Plan (UDP)

Group #09600

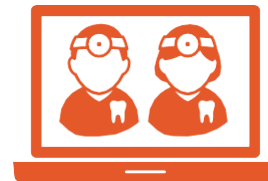
## THIS IS THE DELTA DENTAL PPO PLAN

*Best for those who want the freedom to choose their favorite dentist*

- > You pick your dentist from a large state and national provider network
- > Get specialist care without a referral
- > Deductible waived for preventive care and children under age 15
- > Posterior composite filling coverage
- > Enhanced crown coverage
- > Coverage for out-of-network care

Visit a Delta Dental PPO<sup>SM</sup> network dentist to receive services at discounted rates and avoid balance-billing.

Check that your dentist is in-network or find a new PPO dentist:



1. Visit [DeltaDentalWA.com](https://www.DeltaDentalWA.com)
2. Click on **Online Tools** and use our *Find a Dentist* tool.
3. Select **Delta Dental PPO** to filter your search results.
4. Contact the dental office to confirm they're accepting new patients.



### HELPFUL ONLINE TOOLS

Activate your MySmile<sup>®</sup> account online at [DeltaDentalWA.com/mysmile](https://www.DeltaDentalWA.com/mysmile). Use it to:

- > Print your ID card.
- > View your coverage.
- > Get instant out-of-pocket cost estimates with MySmile Cost Genie<sup>®</sup>.
- > Endorse your favorite dentist and help other patients find theirs.
- > Review your Explanation of Benefits (EOB).